















South Florida
POLICE



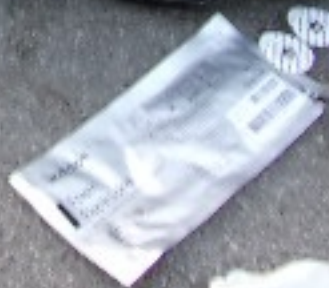




























































PALM W
HEMIPRA

STOP

PEDESTRIAN CROSSING

CAUTION

PALM AVE
100 S.
VENTURA ST.

STOP

WALKING

CAUTION



PALM WY.

100 S

STOP

FMR

STOP

PALM AVE
100 S
VENTURA ST
100 E

























San Diego
POLICE

461

CA 0280
1427559



DODGE

DODGE







SONOMA

GMC TRUCK



VISTA

FRONTIER

XLE





































State Police
POL

32















State - Park
POLICE

1427558

462













NO PARKING
ANYTIME
ON THIS STREET
DURING
CONSTRUCTION





POLICE

421

*Committed to
Community Service*



*Committed to
Community Service*

PO



POLICE

Santa Rosa

*Committed to
Community Service*



123

CRIME SCENE DO NOT CROSS





*'Committed to
Community Service'*













*"Committed to
Community Service"*





Santa Paula

POL

421











NO PARKING IN AREAS MARKED AS
FIRE LANE
VEHICLES WILL BE CITED OR TOWED
AT VEHICLE OWNER'S EXPENSE
OC 28861 OC 28864
AIRPORT TOWING
805-285-1200 (805) 796-4141
SANTA PAULA (805) 525-4474

NOTICE
THIS AREA IS
PATROLLED BY
Special Security
805-228-8000
911

PRIVATE
PROPERTY
NO
TRESPASSING
PROHIBIDO
ENTRAR SIN
AUTORIZACION
TODAS LAS HORAS

**PRIVATE
PROPERTY**
UNAUTHORIZED VEHICLES
WILL BE TOWED OR IS AT
OWNER'S EXPENSE
LA VEHICULO CUIDA PROHIBIDO
SANTA PAULA
805-505-4474
AIRPORT TOWING
805-583-5700
WE ALSO DO ROAD SERVICE,
LOCK-OUTS, & OIL SERVICES
IN ADDITION TO TOWING

CRIME SCENE DO NOT CROSS

SHERIFF'S LINE DO NOT CROSS

[Redacted faces of individuals]



Santa Paula
POLICE

421



















Ventura County Sheriff's Office
Forensic Services Bureau

LAB#

-REPORT#

02

SECTION

CSI

RB#

17-50845

NAME/ID#

DATE

4-9-17

ESMAEL CORDERO
Investigative Supervisor



ISMAEL CORDERO
Investigations Supervisor





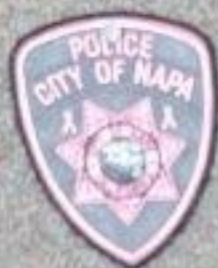
10
Santa
Meeting Process
Public Access
1/18/2018

The following information is provided for your information. It is not intended to be a substitute for legal advice. If you have any questions, please contact the Santa Paula Police Department at (805) 885-1234.

Information concerning the Santa Paula Police Department's meeting process is available on the department's website at www.santapaula.org. The department's meeting process is designed to ensure that the public has an opportunity to be heard on issues that affect the community. The department's meeting process is outlined in the following information.

The department's meeting process is designed to ensure that the public has an opportunity to be heard on issues that affect the community. The department's meeting process is outlined in the following information.

The department's meeting process is designed to ensure that the public has an opportunity to be heard on issues that affect the community. The department's meeting process is outlined in the following information.





EMIL COBBERO
Investigative Services

SANTA FE
POLICE







Police Department
[Illegible text]





 **City of Santa Fe**
Department of Public Safety
Office of the Chief of Police
1000 North First Street
Santa Fe, NM 87501
Phone: 505.988.3000
Fax: 505.988.3001
www.santafe.org

Public Notice

The City of Santa Fe is currently reviewing the proposed changes to the Santa Fe Police Department's uniform and equipment. The proposed changes include the addition of a new color to the uniform and the replacement of the current equipment with new equipment. The City of Santa Fe is currently reviewing the proposed changes and will be holding a public hearing on the matter. The public hearing will be held on [Date] at [Time] at the [Location]. The public is invited to attend the hearing and provide input on the proposed changes. The City of Santa Fe will be making a final decision on the proposed changes by [Date].





L. CORDERO
Captain, Supervisor



OFFICE OF THE SHERIFF
SANTA PAULA, CALIFORNIA
POLICE DEPARTMENT







CORREIO
Santa Catarina

































EL CORDERO
Lighting Supervisor



Document with text and a logo, possibly a notice or report.











5.11

LIGHTNING POWDER
1-800-347-1200







































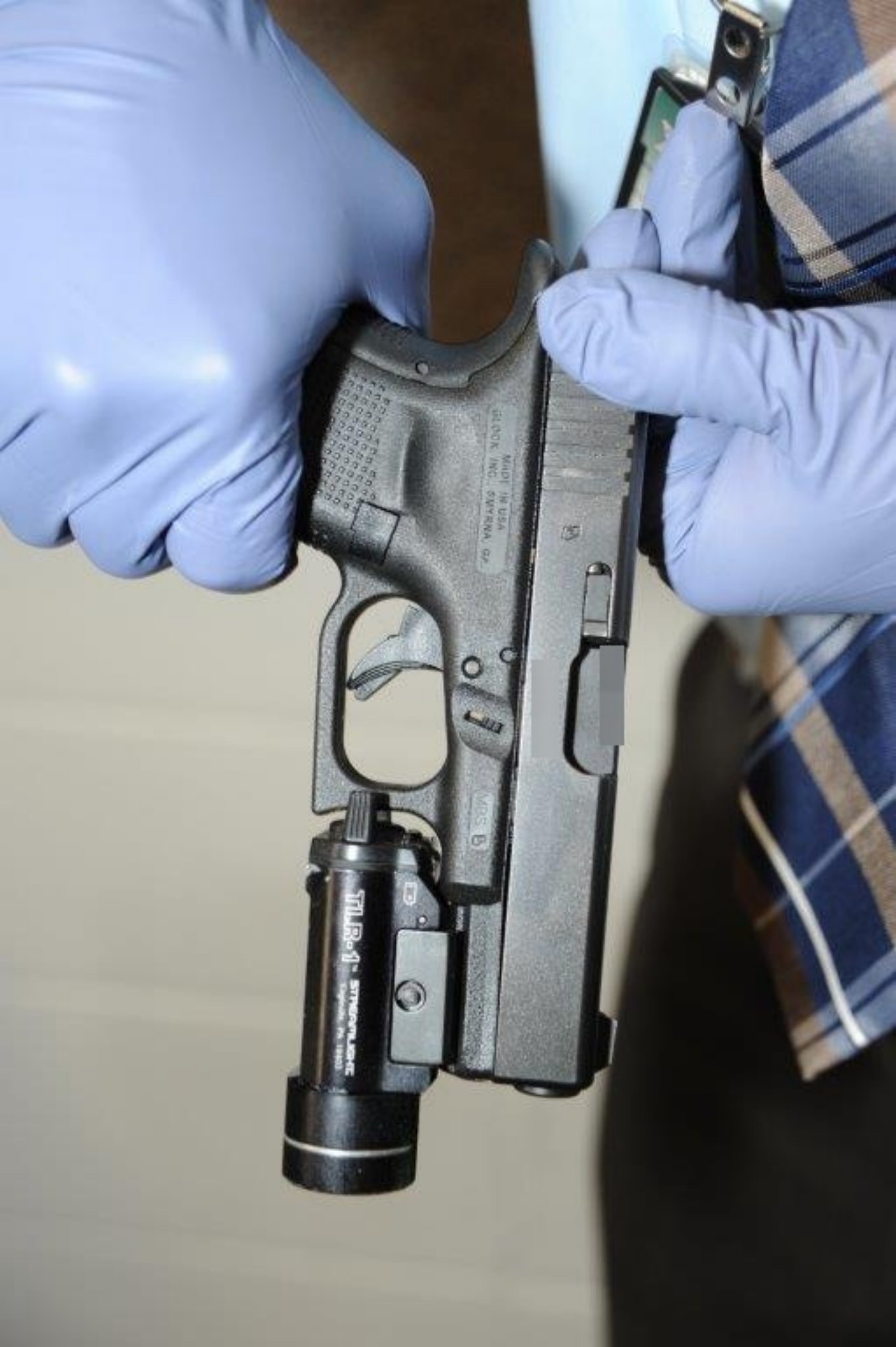












TLR-1 - STRONGHOLD
Syracuse, NY 13203

MADE IN USA
GLOCK, INC. SYRACUSE, NY

WGS B

MADE IN USA
GLOCK, INC., SMYRNA, GA.

D

MBS D

TLR01

SMYRNA
Georgie









40

5

4

7

6

9

8

11

10

13

12

ROCK
AUSTRIA



















J. COFFELT



EMUEL CONDEYO
Investigative Specialist









EMANUEL COVEDINO
Investigative Supervisor

SANTA FE
POLICE





APRIL

DATE	EVENTS
1	
2	
3	
4	
5	
6	
7	
8	
9	
10	
11	
12	
13	
14	
15	
16	
17	
18	
19	
20	
21	
22	
23	
24	
25	
26	
27	
28	
29	
30	
31	







ISRAEL CORDERO
Investigator's Supervisor





ISMAEL CORDERO
Investigative Supervisor























SMAIL CORDEIRO

Investigator Supervisor











ROCKY



CORDEIRO
Area Supervisor















MADE IN AUSTRIA
GSSOR INC. SMYRNA, GA.

STLRad HL
www.stlrad.com

MADE IN AUSTRIA
GLOCK, INC. SMYRNA, GA.



MBS

TLR-1 HL
www.stpp.com



Q1579618 1000 879

MADE IN AUSTRALIA
GASCO INC. SYDNEY, NSW

TLR-1 HL
www.strikerpl.com



G&S PAT. 5,158, 877

MADE IN AUSTRIA
GLOCK INC. SAVERNA, GA.

TIR01 HL
www.stromlicht.de















































































































.40

AUSTRIA

GSG 22 G&H



TLR-1's STREAMLIGHT

S/N 024558 0610

PATS 7,188,970 / D543,446



U.S. PAT. 5,100,073

MADE IN AUSTRIA
GLOCK, INC. SYRUSA, GA

TLR-15
SUREFIRE
ESTABLISHED IN 1982



MADE IN AUSTRALIA
SINCE INC. BERTHOVA, GA.

TLR-1s Streamlight
Espey, Inc. 1990

MBS



1911

3

TPI B-4

+

DELTA SYSTEMS
24110 C. STARRA, CA



10

YES





...KNOWLEDGE...











40

5

7

9

11

13

15

4

6

8

10

12

14

LOCK

1633-03



40

07

5

4

7

6

9

8

11

10

13

12

15

14

LOCK

1633-03

























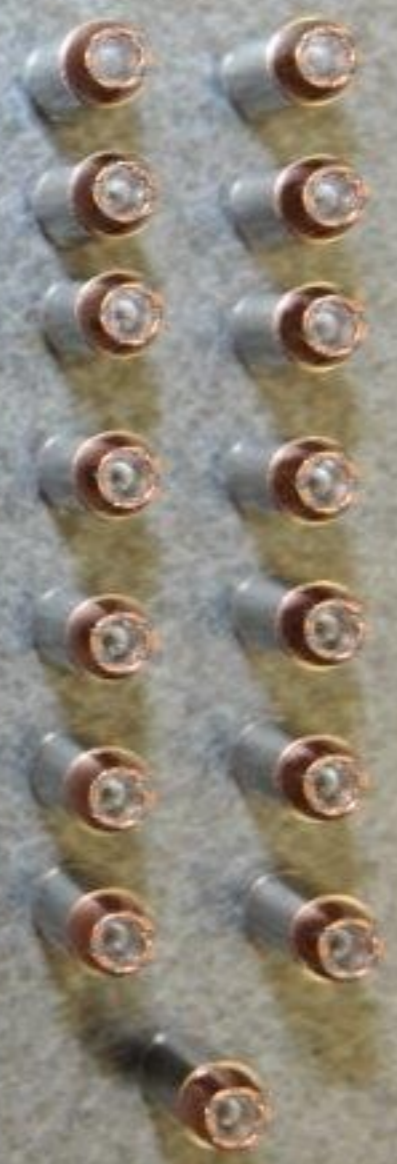






















40

5
4

7
6

9
8

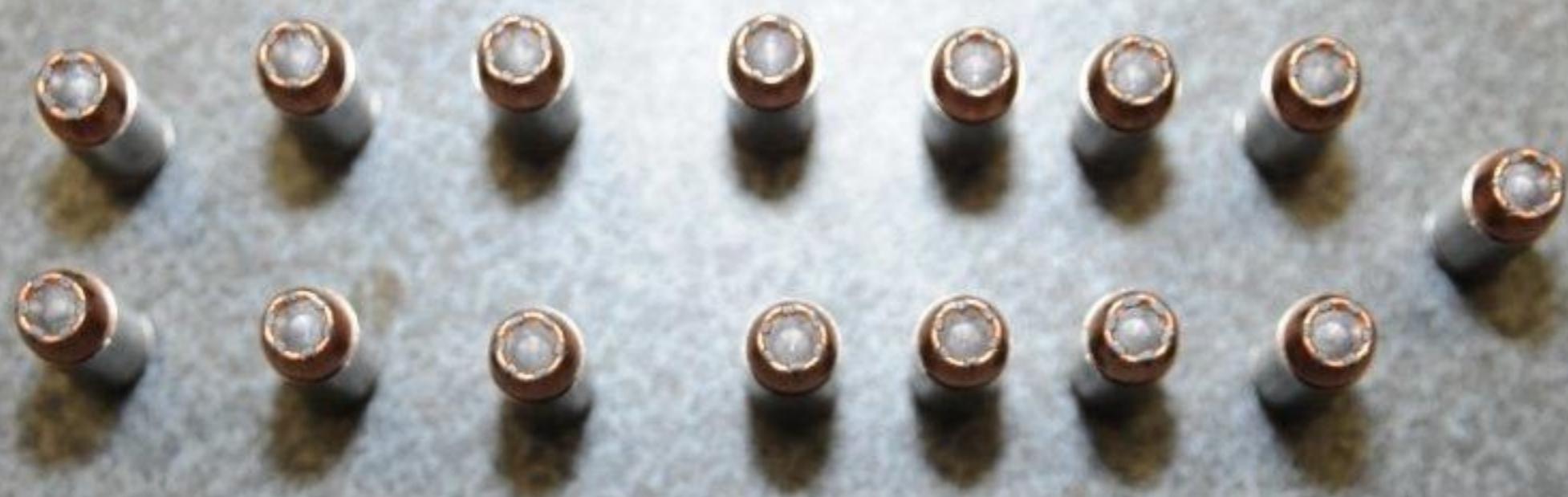
11
10

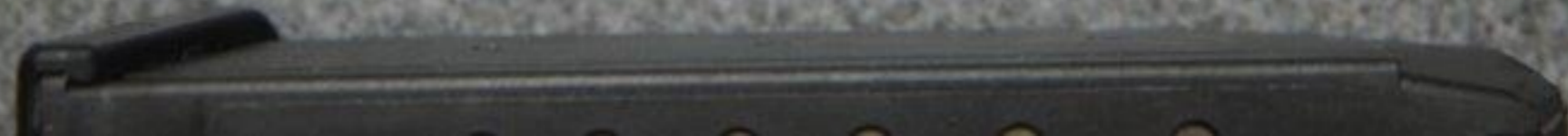
13
12

15
14

LOCK

1633-03















SPPD
1304F





Handheld scanner with a lens and a black rectangular sensor. The scanner is yellow and black. A label on the side contains technical specifications and safety warnings.

CAUTION

1. Do not use the scanner on any surface that is not labeled as safe for use with this scanner.

2. Do not use the scanner on any surface that is not labeled as safe for use with this scanner.

3. Do not use the scanner on any surface that is not labeled as safe for use with this scanner.

4. Do not use the scanner on any surface that is not labeled as safe for use with this scanner.

5. Do not use the scanner on any surface that is not labeled as safe for use with this scanner.

6. Do not use the scanner on any surface that is not labeled as safe for use with this scanner.

7. Do not use the scanner on any surface that is not labeled as safe for use with this scanner.

8. Do not use the scanner on any surface that is not labeled as safe for use with this scanner.

9. Do not use the scanner on any surface that is not labeled as safe for use with this scanner.

10. Do not use the scanner on any surface that is not labeled as safe for use with this scanner.



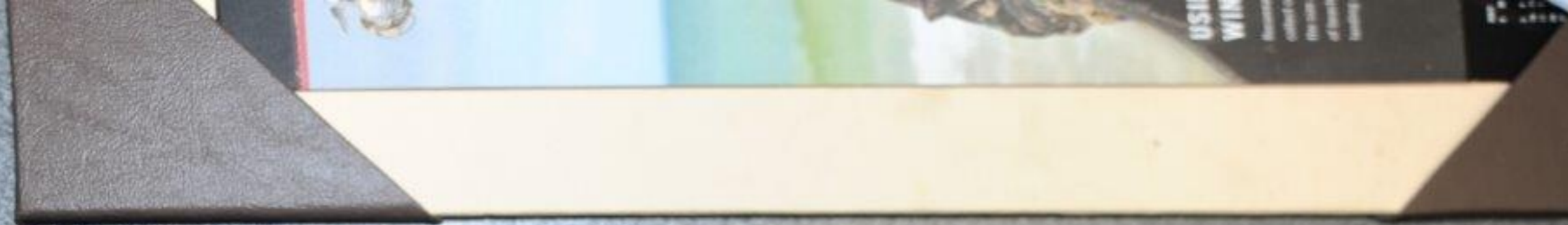






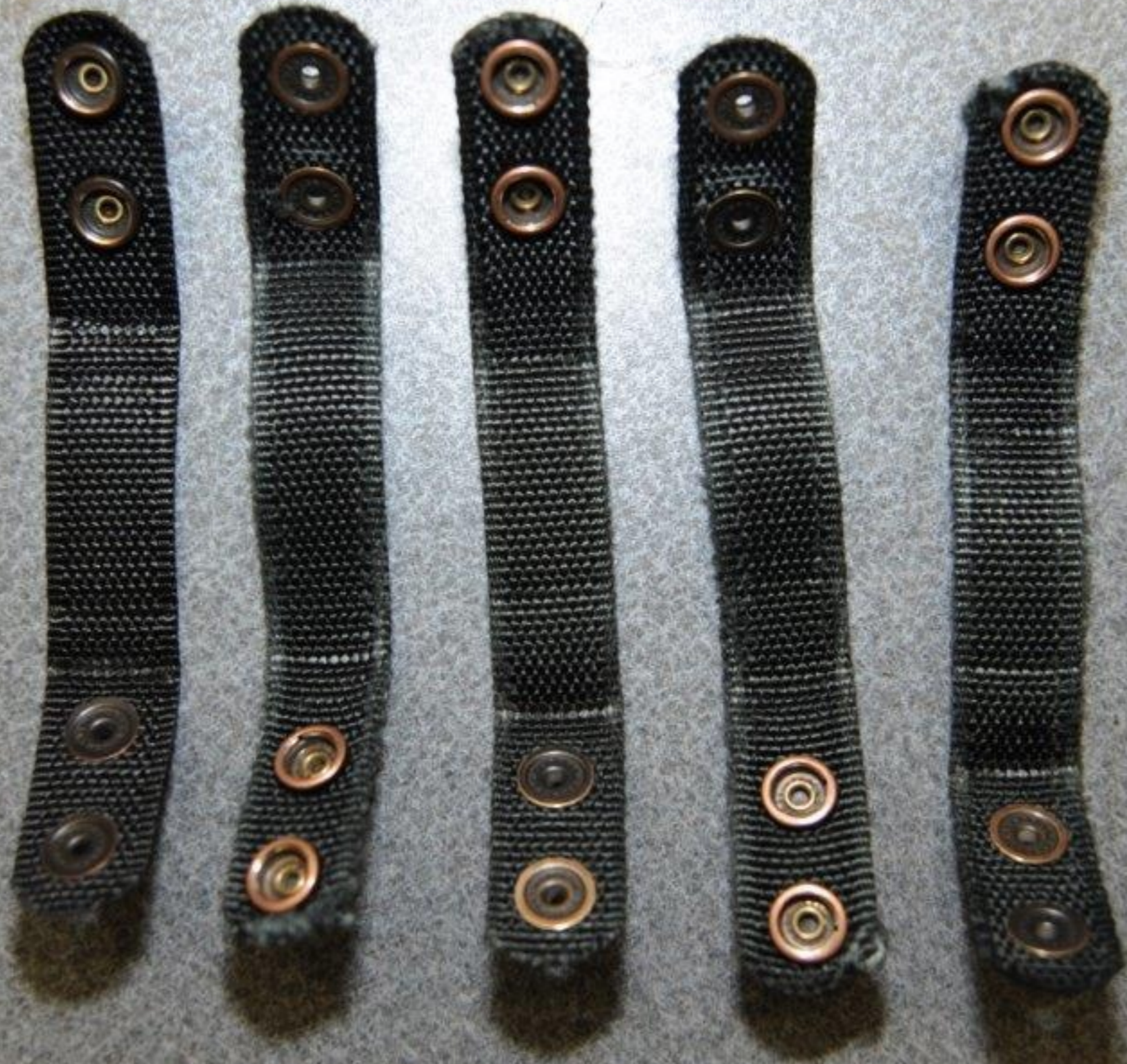


USING KNOWLEDGE TO WIN ON THE MARKET



















9 OPERATION INADI FREEDOM
MARINES SEIZE BAHADUR (2001)

10

PASSENGER DEPARTS AT SINGAPORE

11

2

3

4

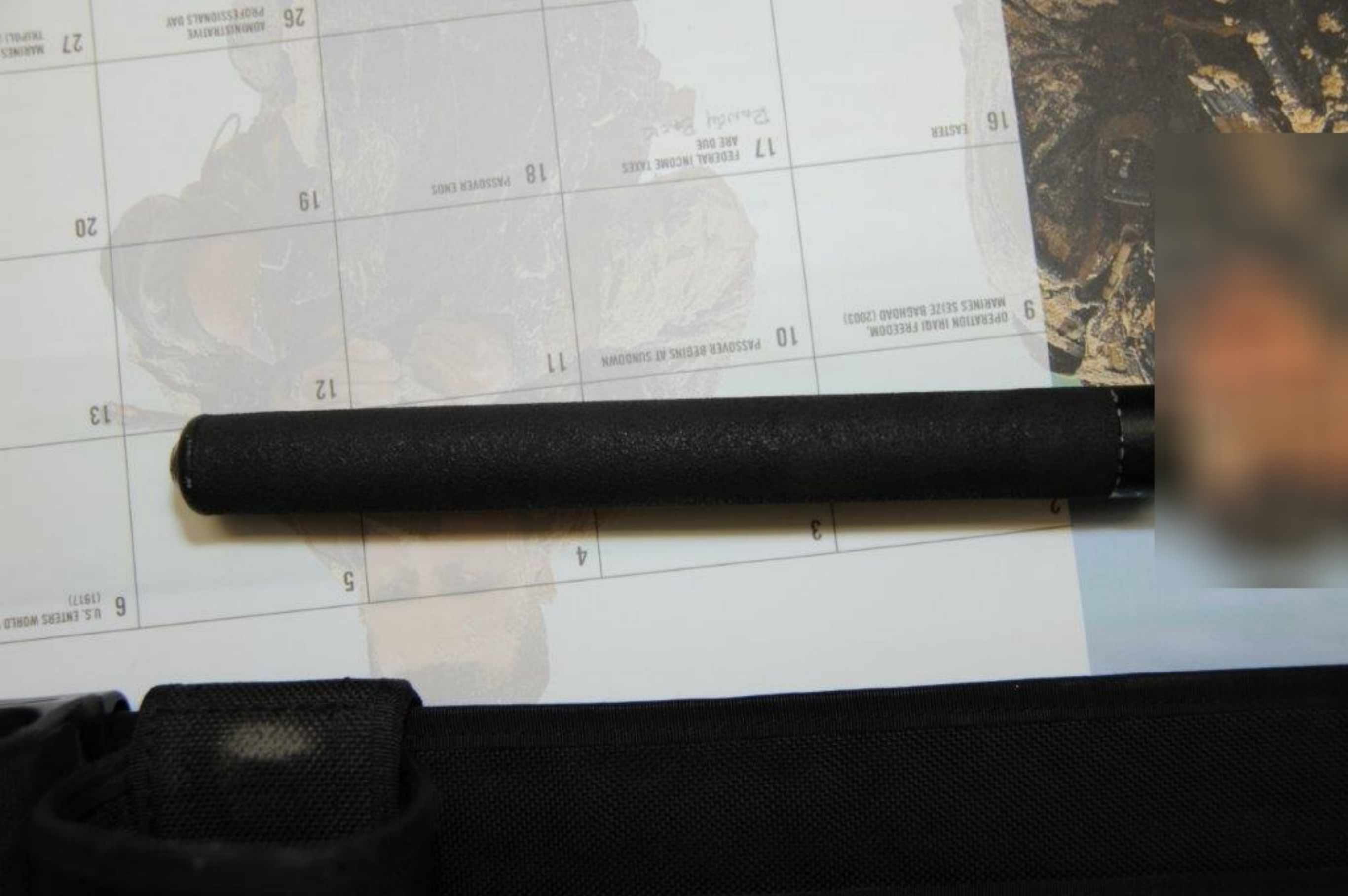












6 U.S. ENTERS WORLD (1917)

5

4

3

13

12

11

10 PASSOVER BEGINS AT SUNDOWN

9 OPERATION IHADI FREEDOM, MARINES SEIZE BAGHDAD (2003)

20

19

18 PASSOVER ENDS

17 FEDERAL INCOME TAXES ARE DUE

Passover

16 EASTER

27

26 ADMINISTRATIVE DAY PROFESSIONALS DAY



9 OPERATION IRAQI FREEDOM
MARINES SEIZE BAGHDAD (2003)

16 EASTER

17 FEDERAL INCOME TAXES
ARE DUE
Buddy Back

18 PASSOVER ENDS

19

26 ADMINISTRATIVE
PROFESSIONALS DAY

27

2

3

4

5

6 U.S. EMBASSY
BOMBED (1998)



23

24

25

26

27

ADMINISTRATIVE DAY
PROFESSIONALS DAY

16

EASTER

17

FEDERAL INCOME TAXES
ARE DUE

Beauty Salon

18

PASSOVER ENDS

19

2

3

4

5

6

U.S. ENT (1917)



23

24

25

26

ADMINISTRATIVE DAY
PROFESSIONALS DAY

27

16

EASTER

17

FEDERAL INCOME TAXES
ARE DUE

Bundy Back

18

PASSOVER ENDS

19



2

3

4

5

11

PASSOVER BEGINS AT SUNDOWN

10

OPERATION IRAQI FREEDOM,
U.S. MILITARY OPERATION (2003)

12

6

U.S. ENVIRONMENTAL PROTECTION AGENCY
(1913)



FIELD,
TO

23

24

25

26

ADMINISTRATIVE
PROFESSIONALS DAY

11 ARE DUE
BANDY BACK

16
EASTER

2

3

4

5

6

9

OPERATION IRAQI FREEDOM,
MARINES SEIZE BAGHDAD (2003)

10

PASSOVER BEGINS AT SUNDOWN

11

12



supports.
nine what kind of
ent type and slope
g. In this case,
ght, but to

FIELD.
0

30

NOTES

23

24

25

26

16

EASTER

17

FEDERAL INCOME TAXES
ARE DUE

18

PASSOVER ENDS

19

9

OPERATION IRAQI FREEDOM,
MARINES SEIZE BAGHDAD (2003)

10

PASSOVER BEGINS AT SUNDOWN

11

12



Police

950549

*Committed to
Community Service*

POLICE *Santa Paula*



Santa Rosa
POLICE

953549

*Committed to
Community Service*

POLICE
Santa Rosa







*Committed to
Community Service*

PC

...illed to
...ity Service"

*Committed to
Community Service!*





*"Committed to
Community Service"*

San Jose
POLICE

950549

438



South Florida
POLICE

FLORIDA
950549

436

*"Committed to
Community Service"*



*Commit
Commun*

San Jose
POLICE

950549

436



*'Committed to
Community Service'*

Santa Paula

POLICE

California
950549

436



Santa Paula

SANTA PAULA
CA EXEMPT
1485722
CHEVROLET

POLICE

ta Paula







POLICE

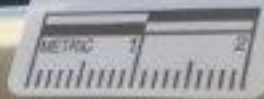
*Dedicated to
Community Service*

POLICE

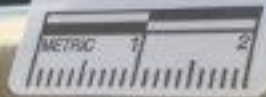


A

A



A



A



*Committed to
Community Service"*

8



*Committed to
Community Service"*

B



B



B



South Pointe
POLICE

950549

*"Committed to
Community Service"*

*Committed to
Community Service*

San Jose
POLICE

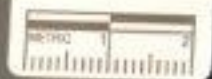
438

7620081

*"Committed
Community*



C

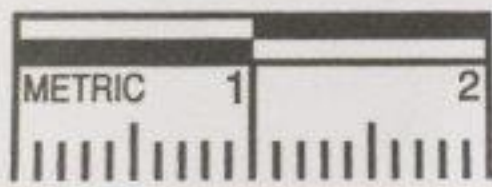




C



C



C



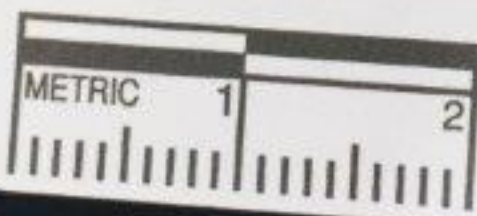
C



C



C



Santa Paula

11485722
CHEVROLET

POLICE

D

Santa Paula

11485722
CHEVROLET

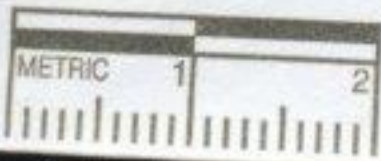
POLICE



D



D







421